

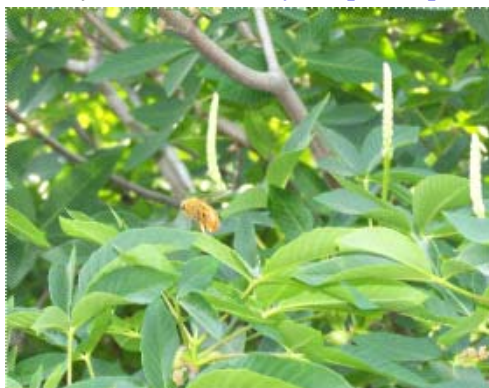
# Valley Habitat Heroes!

(Common Madia)



Common name	Species name	Flowering season	Animals
Black Willow	<a href="#"><i>Salix goodingii</i></a>	very early to early	Insects, Birds (warblers, thrushes, finches, sparrows)
California Buckeye	<a href="#"><i>Aesculus californica</i></a>	early	Insects, Hummingbirds
Pine Bee Flower	<a href="#"><i>Phacelia imbricata</i></a>	early	Pollinators
Valley Oak	<a href="#"><i>Quercus lobata</i></a>	early	over 300 species of animals
Western Hoptree	<a href="#"><i>Ptelea crenulata</i></a>	early	Insects+ Flycatchers, scrub jays
Western Redbud	<a href="#"><i>Cercis occidentalis</i></a>	early	Hummingbirds, finches
Whiteleaf Manzanita	<a href="#"><i>Arctostaphylos viscida</i></a>	very early	Insects, Hummingbirds
Blue Elderberry	<a href="#"><i>Sambucus mexicana</i></a>	early to late	Birds
Buckwheat	<a href="#"><i>Eriogonum spp.</i></a>	early to late	Insects
California Poppy	<a href="#"><i>Eschscholzia californica</i></a>	early to late	Insects
Foothill Penstemon	<a href="#"><i>Penstemon heterophyllus</i></a>	early to late	Hummingbirds
Snowberry Bush	<a href="#"><i>Symphoricarpos albus</i></a>	early - mid	Hummingbirds
Yerba Santa	<a href="#"><i>Eriodictyon californicum</i></a>	early - mid	Insects
California Coffeeberry	<a href="#"><i>Rhamnus californica</i></a>	mid	Birds
Hollyleaf Redberry	<a href="#"><i>Rhamnus ilicifolia</i></a>	mid	Waxwings, towhees, grosbeaks
Silver Bush Lupine	<a href="#"><i>Lupinus albifrons</i></a>	mid	Pollinators
Toyon, Christmas Berry	<a href="#"><i>Heteromeles arbutifolia</i></a>	mid	Insects, Birds
Buttonbush	<a href="#"><i>Cephalanthus occidentalis</i></a>	late	Insects, Seeds eaten by water fowl
Common Madia	<a href="#"><i>Madia elegance</i></a>	late	Pollinators
Wooly Blue Curls	<a href="#"><i>Trichostema lanceolatum</i></a>	late	Insects, Hummingbirds
California Fuchsia	<a href="#"><i>Zauschneria canum</i></a>	late to very late	Hummingbirds, Pollinators
Coyote Brush	<a href="#"><i>Baccharis pilularis</i></a>	late to very late	Sparrows, Finches, Insects

Buckeye Candles w/ [\*Xylocopa varipuncta\*](#)



[www.SacValleyCNPS.org](http://www.SacValleyCNPS.org)

Pine Bee Flower (in summer)



[www.SacramentoAudubon.org](http://www.SacramentoAudubon.org)

Hollyleaf Redberry

